



Forest Edge

Drybrook, GL17 9HY

£300,000



Dean Estate Agents offer for sale this charming modern detached bungalow, having a fitted kitchen/diner, a light and airy living room, Main bedroom with en-suite shower room, a further double bedroom and separate family bathroom.

Upon entering, you are welcomed into an L shaped hallway with built in cupboard, reception room that provides a warm and inviting atmosphere, perfect for relaxation or entertaining guests. The layout is thoughtfully designed to maximise space and light, creating a homely feel throughout.

The bungalow boasts two modern bathrooms, ensuring that both residents and visitors have ample facilities. This feature adds to the practicality of the home, making it suitable for a variety of lifestyles.

For those with vehicles, the property includes parking for two vehicles, a valuable asset in today's busy world. The outdoor space surrounding the bungalow offers potential for gardening or simply enjoying the fresh air in a tranquil setting.

Located in the picturesque area of Drybrook, this property is not only a home but a lifestyle choice, providing easy access to local amenities and the natural beauty of the surrounding countryside. This bungalow is a wonderful opportunity for anyone looking to settle in a peaceful yet accessible location.



Entrance Hallway :

4'1" x 12'3" (1.27 x 3.74)

L shaped, storage cupboard, radiator, access to loft space (partially boarded with a ladder).

Living Room :

19'4" x 12'4" (5.90 x 3.77)

Spacious and light room with, double glazed window and double glazed French patio doors to rear.

Kitchen / Diner :

13'5" x 12'1" (4.11 x 3.70)

Wall and base cabinets, 1.5 bowl sink unit, plumbing for washing machine and dish washer, gas cooker point, extractor hood, wall mounted gas boiler, down lighting, tiled floor, door to side, double glazed window to front aspect.

Family Bathroom :

8'3" x 8'4" (2.52 x 2.56)

White suite comprising of bath with shower over, low level WC, pedestal wash hand basin, airing cupboard with hot water tank, radiator, double glazed window to front aspect, extractor fan.

Bedroom 1 :

12'7" x 12'5" (3.86 x 3.80)

Built in twin wardrobe, radiator, double glazed bay window to rear aspect.

En-suite Shower Room :

4'6" x 9'1" (1.38 x 2.79)

Shower cubicle, low level WC, pedestal wash hand basin, radiator, extractor fan, shaver point, double glazed window to rear aspect.

Bedroom 2 :

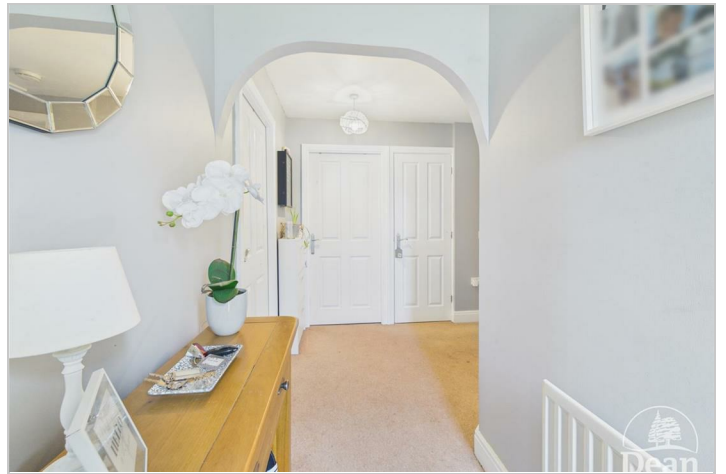
10'8" x 9'10" (3.27 x 3.02)

Built in wardrobe, radiator, double glazed window to front aspect.

Outside :

Front - Garage and off road parking for one vehicle (garage is the right hand side of the pair). Brick retaining wall leading to the entrance, small rockery and mature tree.

Rear - Side gate access, large patio adjacent to the property, tiered garden with steps to the lawn area at first level and further patio at second level, security lighting.



Consumer Notes: Dean Estate Agents Ltd have prepared the information within this website/brochure with care and co-operation from the seller. It is intended to be indicative rather than definitive, without a guarantee of accuracy. Before you act upon any information provided, we request that you satisfy yourself about the completeness, accuracy, reliability, suitability or availability with respect to the website or the information, products, services, or related graphics contained on the website for any purpose.

These details do not constitute any part of any Offer, Contract or Tenancy Agreement.

Photographs used for advertising purposes may not necessarily be the most recent photographs, although every effort is made to update photographs at the earliest opportunity. Any reliance you place on such information is therefore strictly at your own risk. All photographic images are under the ownership of Dean Estate Agents Ltd and therefore Dean Estate Agents retain the copyright.

You must obtain permission from the owner of the images to reproduce them.

Tenanted Property – we are not always able to show the most recent condition of a property due to tenants' privacy and we may choose to show the photographs of the property when it was last vacant to at least allow clients some idea of the internal condition. Therefore, we would of course, urge you to view before making any decisions to purchase or rent the property and before any costs.

Energy Performance Certificates are supplied to us via a third party and we do not accept responsibility for the content within such reports.

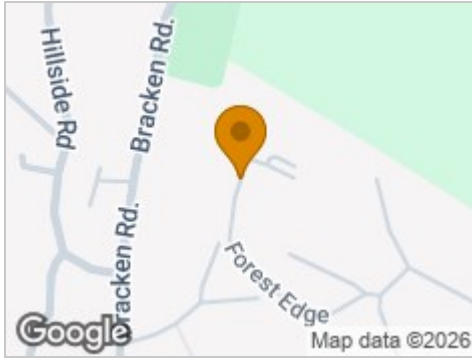
PRC Certificates – Some ex-local authority properties have been repaired in recent years using the PRC Scheme wherein a certificate has been produced by a qualified property engineer. This certificate does not imply the suitability for a mortgage approval and you must satisfy yourself of the work carried out that may meet your lenders criteria.

As with leasehold property or new build development sites, you are likely to be responsible for a contribution to management charges and/or ground rent or a contribution to the development service charge. Please enquire at the time of viewing.

You may also incur fees for items such as leasehold packs and, in addition, you will also need to check the remaining length of any lease before you complete a mortgage application form.

Please ask a member of our team for any help required before committing to purchase a property and incurring expense.

Road Map



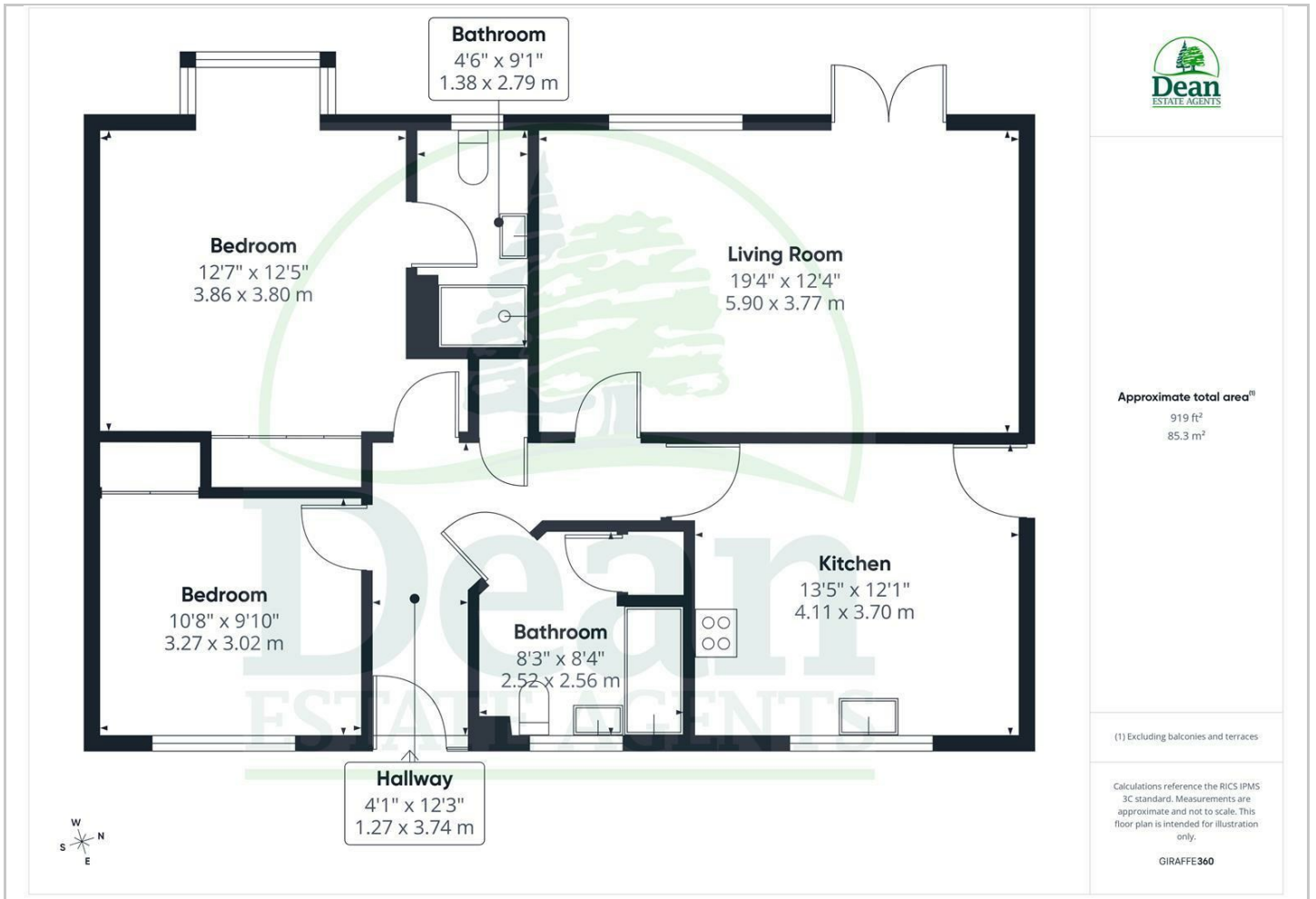
Hybrid Map



Terrain Map



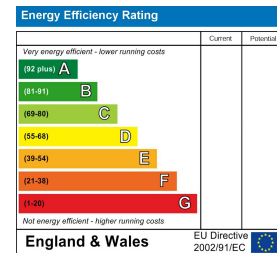
Floor Plan



Viewing

Please contact our Cinderford Office on 01594 825574 if you wish to arrange a viewing appointment for this property or require further information.

Energy Efficiency Graph



These particulars, whilst believed to be accurate are set out as a general outline only for guidance and do not constitute any part of an offer or contract. Intending purchasers should not rely on them as statements of representation of fact, but must satisfy themselves by inspection or otherwise as to their accuracy. No person in this firm's employment has the authority to make or give any representation or warranty in respect of the property.